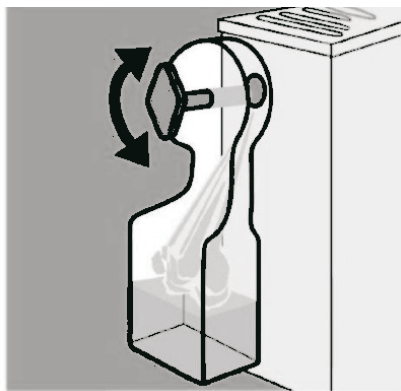
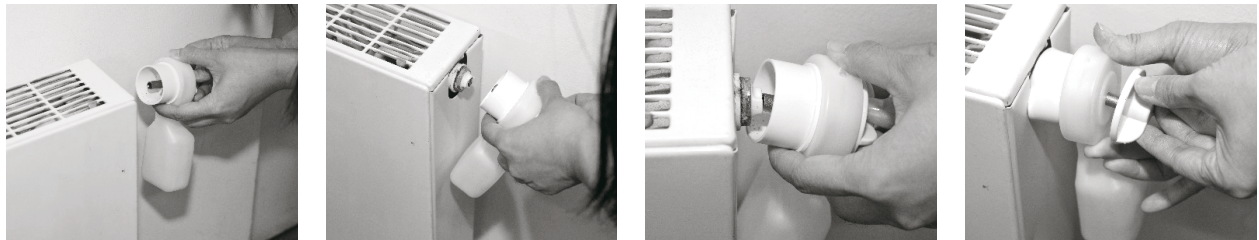


# Radiator Bleeder (Pack of 2)

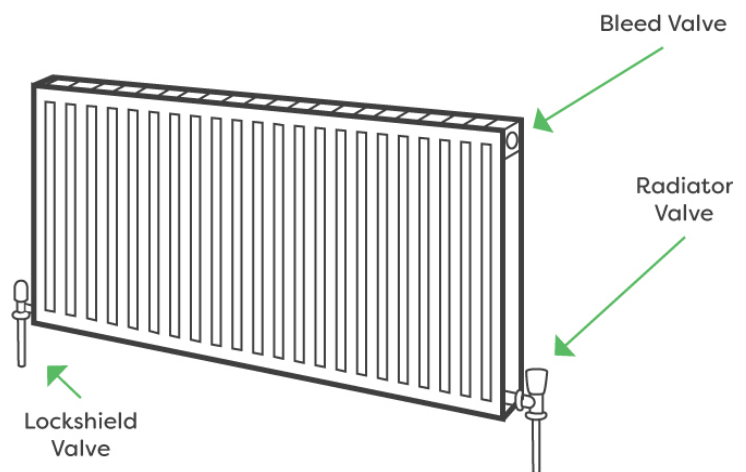
## INSTRUCTION MANUAL

### HOW TO USE

- Ensure heating is off and radiator is cold before bleeding.
- Attach the radiator bleeder onto bleed valve and ensure the key is inserted into the bleed screw on the radiator in the bleed valve.
- Use one hand to firmly push and hold the top of the radiator bleeder against the radiator and the other hand to push and hold the knob of the screw. Turn anti-clockwise to open the valve. Ensure you turn it slowly to avoid injury from any air that may escape. Ensure you hold the knob of the screw hard enough, so no leaking occurs.
- You should hear a hissing sound as air escapes from your radiator.
- Water will drain into the collector.



### Radiator Diagram



#### TECHNICAL SPECIFICATION

Measurement: (H)15 x (W)5.5 x (D)6.0 cm

Material: ABS PE and metal

Volume of collector: 120ml

Model No. EL5965

Please read carefully before use and keep for future reference

EasyLife Ltd, London, NW1 0JP

**Support Line: 0333 030 0777**

© EasyLife Ltd. 2021 (Reg. No. 05221840)

For more innovative products, please visit

[www.easylife.co.uk](http://www.easylife.co.uk)