

Super Deluxe Rumaton Bracelet

INSTRUCTION MANUAL

Model No. EL5585 / EL5587

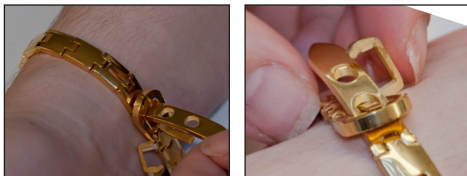
Please read carefully before use and keep for future reference

HOW TO USE

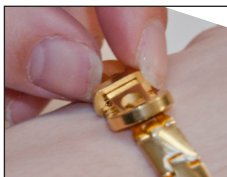
1. Open clasp



2. Place bracelet into desired position



3. Close clasp over bracelet



TECHNICAL SPECIFICATION

Measures: EL5585 = 21cm // EL5587 = 24cm

Warning: Not suitable for use in water. Remove bracelet before swimming, showering/bathing

Imported and distributed by Easylife Group Ltd, London NW1 0JP

Support Line: 0333 030 0777

For more innovative products from Easylife please visit:

www.easylifegroup.com

IN5585 ©2018 Easylife Group Ltd

 **easylife**[™]
Est. 1992 everyday solutions