

## DISPOSAL

- Please respect the environment!
- Dispose of the packaging according to the local recycling regulations.
- Dispose of the appliance at the end of its life span according to environmental considerations.

## ⚠ WARNING

This product is intended for domestic use only.

## TECHNICAL SPECIFICATION

Solar panel: 2V/30MA, 25 x 25MM amorphous solar panel  
Light source: 2 x color changing LEDs  
Battery: 1 x Ni-MH 2/3 AAA 100mAh 1.2V battery  
Charging time: Minimum of 8 hours under direct sunlight  
Measures: 4.6 dia x 33 H cm

Imported and distributed by Easylife Group Ltd, London NW1 0JP

**Support Line: 0303 0310 777**

For more innovative products from Easylife please visit:

[www.easylifegroup.com](http://www.easylifegroup.com)

# Colour-Changing Solar Stake Lights (set of 10)

## INSTRUCTION MANUAL



Model No. EL5276

Please read carefully before use and keep for future reference

**Support Line: 0303 031 0777**

For more innovative products from Easylife please visit:  
[www.easylifegroup.com](http://www.easylifegroup.com)

## Dear Customer

Thank you for purchasing the Colour-Changing Solar Stake Lights.

Summer gardens are all about colour, so shouldn't your outdoor lighting be the same? That's the thinking behind this set of 10 stunning solar-powered lights. Charged by day via their discreet integral solar panels, they shine and change through a sequence of beautiful jewel-like colours at night. Each progresses through a cycle of emerald green, sapphire blue, amethyst purple and ruby red with a truly magical effect. Costing nothing to run and easy to install, they spike straight into the soil and look fabulous beside paths, drives, borders or patios. And as well as being very pretty, they're also durable and weather-resistant with a brushed, stainless steel finish for years of after-dark enchantment. Height: 33cm including soil spike.

### ⚠ IMPORTANT SAFETY INSTRUCTIONS

- This is not a toy keep out of reach from children and infants.
- Check the product carefully for any signs of damage before use.
- Do not position the lights near any flammable products.
- When placing product on a table or counter please ensure the surface is flat and sturdy.
- This product is water resistant, do not immerse in water.
- This product contains a battery, please recycle and dispose correctly and in accordance with local recycling regulations.
- Do not short circuit or dispose of this product in a fire.
- Keep batteries away from children.
- Always keep the top of light clean, as dirt, dust, etc. will affect the solar panel's ability to absorb sunlight.
- When necessary, use a soft cloth dampened with a mild detergent solution to clean all surfaces. Do not use chemicals, solvents or abrasive materials as these may cause permanent damages.
- Do not immerse the unit in water or other liquids as this will result in permanent damage to the electrical and mechanical parts.
- Keep the battery away from sources of heat and fire, otherwise it may explode.
- Used rechargeable Ni-Cd batteries must be taken to a local authority waste site for proper disposal.

### HOW THE SOLAR STAKE LIGHT WORKS

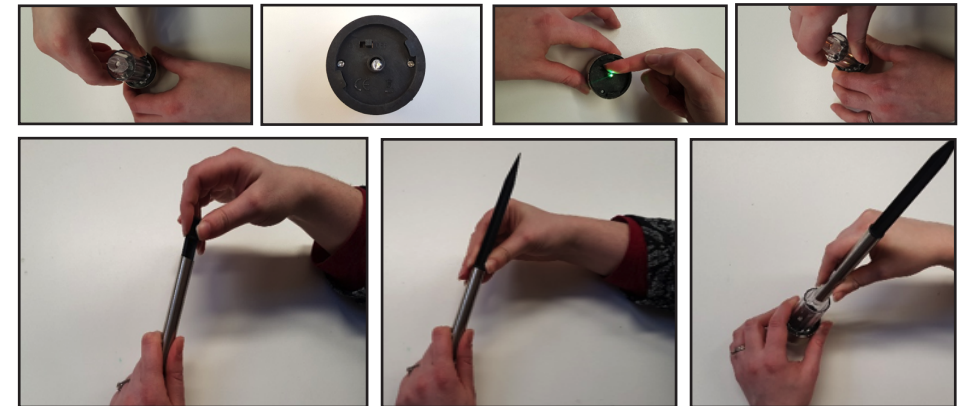
During daytime hours, the solar panel converts energy from the sun into electricity and stores it in the rechargeable battery. At night the light is illuminated using the power that has accumulated in the battery. The amount of electricity stored and available to power the light will depend on weather conditions, strength of the sun, number of daylight hours and position.

### CHOOSING A LOCATION

For best results, choose an outdoor location with a border, where the solar panel can receive at least 8 hours of the sun's rays each day. Avoid placing the product close to other sources of light, e.g. street-light, as this may interfere with the operation of solar light. The solar light is ideal for identifying pathways, the edges of flower beds, lawns, etc.

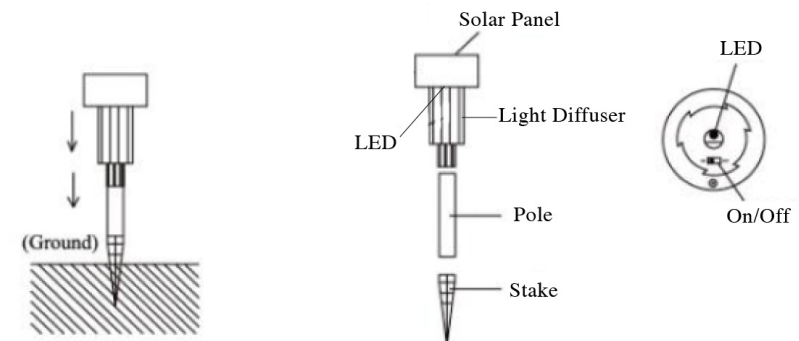
### INSTALLATION

- Remove the lights and the poles from the packaging
- Twist anti-clockwise to remove the light diffuser
- Push the switch to on position
- Put the light cover back into light by twisting clockwise
- Take the ground stake out from the bottom side of stainless-steel pole
- Attached the ground stake to the pole and make sure the pointing side of the stake is facing out



### OPERATION:

- Find the location where you want to put the light but make sure the solar light will get sufficient direct sunlight and will never be covered or under shade.
- Push or place the bottom post into the ground deep enough to support the main body of the light.



### WHAT IF THE SOLAR LIGHT FAILS TO ILLUMINATE?

1. Make sure that solar panel is receiving an adequate amount of sunlight each day.
2. The solar light will only activate in dark surroundings.