



Wireless Remote-Controlled LED Lights

INSTRUCTION MANUAL

Model No. EL5182

Please read carefully before use and keep for future reference

PARTS LIST

4 x Remote-Controlled LED Lights // 1 x Remote Control // 1 x Remote Control Cradle // 3M adhesive pads

BATTERY INSTALLATION

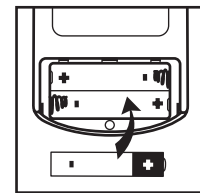
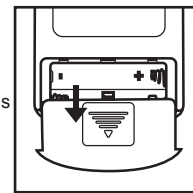
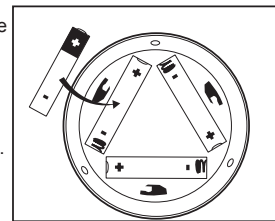
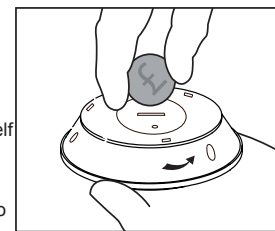
1. Remove all packaging.
2. Remove the Battery Cover from the back of one of the Remote-Controlled LED Lights using either a small coin in the slot and turning anticlockwise, just a few millimetres until it clicks, then lifting away, or gripping the triangular Battery Cover itself and turning that the same way.

PLEASE NOTE: Once the Remote-Controlled LED Lights has been fixed to a surface by screws/adhesive pad, you will no longer have access to the Battery Cover and will need to replace the batteries by gripping the main body of the light and turning it anticlockwise until it clicks open. Please make sure you have a good grip but do not damage the light. Do not use pliers, grips or any other tool to turn the light as this may damage the casing.

3. Insert 3 x AAA 1.5v alkaline batteries. Make sure to match the plus and minus signs (+/-).
4. Always replace all the batteries together. Do not mix old and new batteries, or batteries of different brands or manufacture.
5. Replace the Battery Cover by locating the three small lugs in to the holes on the main body and turning clockwise until it locks into place.

REPEAT FOR THE OTHER LIGHTS

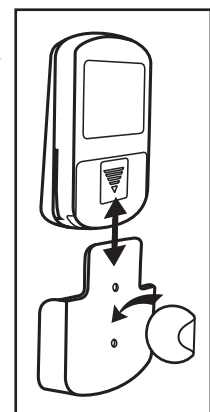
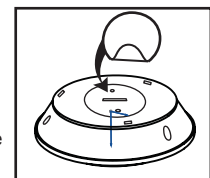
6. To replace the batteries in the Remote Control Locate the Battery Cover at the lower end of the rear of the Remote Control, slide it off and insert 2 x AAA 1.5v alkaline batteries. Make sure to match the plus and minus signs (+/-). Then replace the Battery Cover by sliding it into place.



MOUNTING YOUR REMOTE-CONTROLLED LED LIGHTS

Remote-Controlled LED Lights are for indoor use only. Insert batteries before fixing.

1. Once you have found a desired location, position the 3M adhesive pad in the centre of the Battery Cover, over the slot. Make sure the surface is clean, dry and free from grease and dirt, and apply to the surface with even pressure.
2. Alternatively, remove the Battery Cover and mark the two predrilled holes with a pencil on the surface to be fixed to. Then, using appropriately-sized screws, screw the Battery Cover to the surface. Then offer the main unit to the cover and locate the lugs. Now turn clockwise, locking the light in place on the Battery Cover.

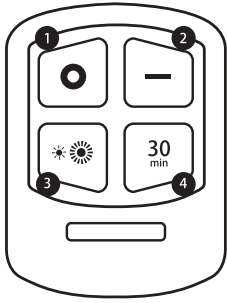


MOUNTING YOUR REMOTE CONTROL CRADLE

1. Once you have found a desired location, position the 3M adhesive pad or doublesided tape in the centre of the Remote Control Cradle. Make sure the surface is clean, dry and free from grease and dirt, and apply to the surface with even pressure. Please be aware that these may damage wall coverings when removed.
2. Alternatively, if you wish to wall-mount the Remote Control Cradle, remove it from the Remote Control and offer it up to the wall, marking the two holes, then, using appropriate drills/screws/plugs etc, screw the cradle to the wall and insert the Remote Control.

Imported and distributed by Easylife Group Ltd, London NW1 0JP
Support Line: 0303 031 0777
 For more innovative products from Easylife please visit:
www.easylifegroup.com

 **easylife**TM
 Est. 1992 everyday solutions



USING YOUR REMOTE-CONTROLLED LED LIGHTS

Each light can be turned on and off individually by pressing the clear plastic cover on the front.

The Remote Control has four buttons:

1. **Power off:** Press once to turn the light/lights OFF or to cancel the timer function (see below).
2. **Power on:** Press once to turn light/lights ON or to return to full brightness after dimming.
3. **Dimmer:** Press once to set the brightness to the lower setting*.
4. **Timer:** Press once to set the lights to stay on for 30 minutes and then go off automatically.

PLEASE NOTE: The Remote Control can be used on individual lights or on a set of lights, depending on where they are positioned. If they are close together they will all react to the Remote Control, placing them further apart (or in different rooms) will make them individually controlled. *There are only two brightness settings: full and dimmed. Total battery duration for each light is approx 30 hours. To conserve energy turn lights off when they are not required for use.

Warning!

- This product is not a toy and should be kept out of the reach of children.
- Keep the plastic bag away from children and pets (risk of suffocation).
- Remote-Controlled LED Lights uses 3 x 1.5v AAA alkaline batteries per light and 2 x 1.5v AAA alkaline batteries in the remote control– do not attempt to install any other type of battery.
- Ensure unit is switched off before inserting batteries.
- Take care to fit batteries to the correct polarity, observing the plus (+) and minus (-) signs.
- Always replace a whole set of batteries at once, do not mix new and old or different types of batteries.
- Remove batteries if the product is to be stored, unused, for a long period of time.
- Non-rechargeable batteries are not to be recharged.

Imported and distributed by Easylife Group Ltd, London NW1 0JP
Support Line: 0303 031 0777
For more innovative products from Easylife please visit:
www.easylifegroup.com

INS182 ©2019 Easylife Group Ltd

 **easylife**[™]
Est. 1992 everyday solutions