

# Polar Fleece Coy Robe

## INSTRUCTION MANUAL

---

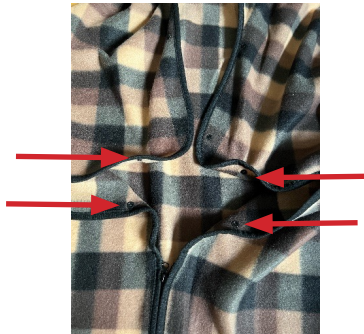
Model No. 2860/2861/2862

Please read carefully before use and keep for future reference

---

### To assemble the buttons

Place the buttons closest to the zip and the next set of buttons above so that the inner parts of the robe are facing each other



Push together



Then attach the upper most buttons together

